

Welcome to West Thames College L3 Creative students



You have enrolled on;

L3 Creative & Digital Diploma

Your art teachers are;

2D lessons Janna Cooper (Course Leader)

3D lessons Paul Whyte

Digital lessons Eduardo Oliveira

SLA (Student Learning Advisor) Jason Dale

Your timetable is;

Three days a week

Includes 9 subject lessons

Includes English, Maths and/or a Work experience workshop (depending on GCSEs)

Has 1 or 2 remote sessions

Has 1 Tutorial session

On Creative you will study;



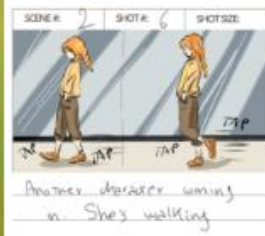
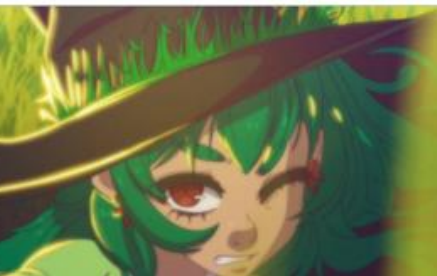
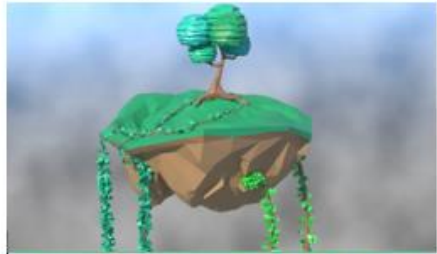
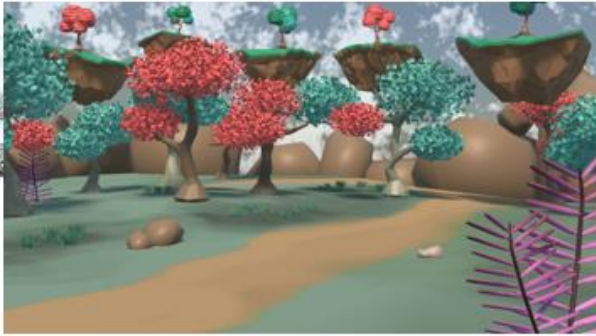
Drawing, painting & mixed media
Graphic design

Photography & manipulating
images

3D Design – models, product
design & sculpture

4D – time based artwork &
moving imagery

On Animation you will study;



2D & 3D animation

3D world creation

Games theory

Stop motion

Character design

Platform games design

3D model making

Photography & Drawing

Weekly remote work



Microsoft Teams

This week you will download teams to your phones. You can contact us using chat. We will share information and messages through the app for example reminders of trips & deadlines.

Vocational remote work (subject homework) is set on Team every week. You should upload your homework to your WordPress blog and submit a screen shot on Teams.

Academic remote work – is allocated to students who have achieved grade 4 in English and/or Maths only. You will be set weekly work on Teams and should upload this work to Teams.

Your teachers will assess this work weekly and give you an **attendance mark** for each piece of work completed on time.



0700-25-GpA-L3-
Creative-and-Digital-...



0700-25-G-GpA-
Academic-and-Study-... ...



Projects and assessments

August		September, 2025					October, 2025				November, 2025				December, 2025					
18	25	1st	8th	15th	22nd	29th	6th	13th	20th	27th	3rd	10th	17th	24th	1st	8th	15th			
DD											DD									
Results Enrolment DD	Results Enrolment DD	Induction Week	Induction Project units 1 & 2		Formative Assessment	Final Submission Summative Assessment	Project 1 Department enrichment trips units 1 & 2			HALF - TERM	Formative Assessment	Target Completion Week	Final Submission Summative Assessment	Project 2 Department enrichment trips Employer brief units 1 & 2						
		January, 2026					February, 2026				March, 2026				April, 2026					
22nd	29th	5th	12th	19th	26th	2nd	9th	16th	23rd	2nd	9th	16th	23rd	30th	6th	13th	20th			
							DD													
CHRISTMAS		Formative Assessment	Target Completion Week	Formative Assessment	Final Submission Summative Assessment	Final Major project launch		HALF - TERM	Final Major Project Exam Department enrichment trips unit 3					EASTER BREAK	Formative Assessment	Target Completion Week				
		2025 - 2026																		
		UAL Awarding Body West Thames College Creative																		
		L3 Creative & Animation Diploma																		
April	May, 2026					June, 2026														
27th	4th	11th	18th	25th	1st	8th	15th	22nd	29th											
	EH	EH								DD										
Formative Assessment	Target Completion Week	Final Submission Summative Assessment	GCSE Exams Employer project IV Standardisation	HALF - TERM	GCSE Exams Employer project IV Standardisation	Applicant Day	UAL External Examination	Creative industries shows Student awards	ADMIN DAYS	28th June - 4th July										

This is a 3 unit course – 2 course work units and 1 exam unit

All units leading up to your final exam are marked as **Pass** but you are given feedback to let you know which areas you are working at higher levels (Merit & Distinction)

The exam unit is your Final Major Project and marked as Pass, Merit, Distinction

The grade you receive for your exam is your final grade for the qualification

How will I submit my work?

You will create a personal blog for each project using WordPress.

Each week you will upload images and screen shots of your practical work to your blog in your **Blog Workshop lesson** and outside of lessons as part of your homework.

You must evaluate and write about your own work on your blog. You will learn to critically analysis your own work and that of others.

You will research artists (Secondary research) and record your own personal research (Primary research) on your blog pages too.

During assessment weeks the course leader will look through your blog and update personal checklists on Teams.

Mount Fuji collage



I started off with a bright yellow background with water colour and a big paint and damped the wet areas with tissue, then I looked through magazines to find weird designs and shapes that I could use in my collage. Then I slowly layered the pieces and drew the mountain with ink and a stick, over the layers. I layered every pieces like a puzzle and at the end I added flowers around. In this work, I am showing how I view Japan, with bright colours colours and bizarre patterns. I really how it turned out in the end and I would like to do more of this but show a story instead. I love the flowers, I think it makes the whole thing stand out. I think this is really pretty but it takes too long and not my style so I do not see myself making a collage for my final body



How will my work be assessed?

Each project is marked by the course leader and you will be given feedback and help on how to improve

You will have a target grade to work towards

You will be given formative assessment & summative feedback in 1:1 meetings

You will agree personal targets with your teachers through out project's and in 'personal target' weeks

Its important you submit work for set deadlines so you have the time to improve your work to meet higher grades

Our college contract

This is our student contract, which outlines the expectations of the college.

We will refer to this regularly throughout the year

You must wear your ID at all times whilst in the college

Please take off hoods/hats & put your phones away in lessons

Standards for Success

Student Learning Contract

We have high expectations for our students. These standards are designed to help you reach your full potential at West Thames College and to support others in achieving theirs.

We expect students to:

- Attend every lesson
- Be on time, every time
- Show respect to students, staff, visitors and neighbours
- Wear your college ID card
- Be ready and equipped for every lesson
- Keep the college clean and tidy
- Meet all homework and assignment deadlines
- Practice online safety and use of appropriate language

We don't expect students to:

- Use a mobile phone in class
- Disrupt lessons
- Eat in class
- Use language or behaviour which may cause offence to others
- Wear hats, caps, headphones, or hoodies in college
- Damage college property

Supporting our students'

To ensure you succeed we provide:

- A safe and healthy place to learn
- Fair treatment and respect
- Extra help if you need it
- Regular updates on your progress, along with information, advice and guidance for future next steps
- Opportunities to share your feedback

Thank you for reading this

We will discuss our expectations and these standards during your induction and throughout your time at West Thames College.



Marta Gajewska
CEO & Principal

West Thames college expects;



If you miss 1 hour per week, your attendance is 94% - Acceptable but not ideal

If you miss 2 hours per week, your attendance is 87% - A cause for concern.

If you miss 3 hours per week, your attendance is 81% - Unacceptable.

If I am late what do I do?

Call the attendance line 0208 2362225 - see sticker

Message your teacher through TEAMS

If you don't contact us we will call you and your parent/guardian

If you are often late or miss lessons you will be placed on contract, your parents/guardian will be invited into college and you will be monitored closely by your teachers and tutor.



Will I have work experience?

The logo for 'upstart' is written in a bold, lowercase, pink sans-serif font. The letters are closely spaced, and the 'u' and 'p' are particularly prominent.The logo for 'JELLY' is written in a white, uppercase, outlined sans-serif font. The letters are bold and have a thick outline, set against a solid dark blue background.

Everyone gets the opportunity to meet with and work with employers across the year during timetabled work experience

This includes working on employer set briefs in college, taking part in lectures and presentations.

You will develop skills and knowledge to prepare you for working in industry

Will we go on trips?

We plan regular trips and visits throughout the year for Project 1 , 2 and the exam unit (FMP)

You will take photographs, notes and sketches to use in your projects



Welcome to the college



Welcome from the
Principal 2025.mp4



What do I do if I need help?

Please ask your teachers and your SLA, Jason Dale (office B537)

Message us on Teams, speak to us in lessons or outside of class and we will do our best to support you.

We hope you enjoy your induction and GOOD LUCK!

