

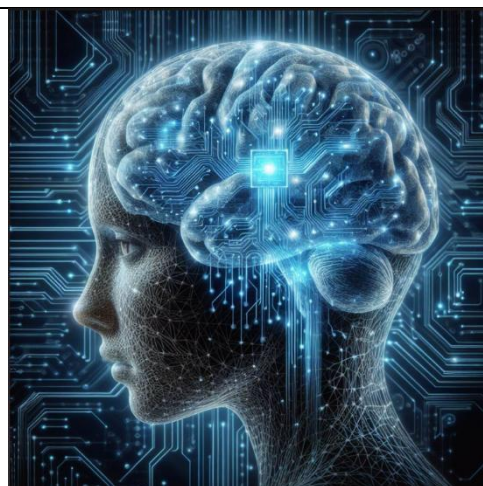
Understanding AI: A Guide for Students

What is AI and Generative AI?

Artificial Intelligence (AI) involves programming computers to perform tasks that require human intelligence, like learning, problem-solving, and decision-making. These systems can improve over time through a process known as machine learning.

Generative AI is a type of AI that creates content such as text, images, or code based on large data sets and user prompts. Examples include:

- **Text Generators:** Tools like Microsoft Copilot or ChatGPT that can write text similar to a human.
- **Image Generators:** Tools like DALL-E or Microsoft Copilot that create images from descriptions.
- **Coding Support:** GitHub Copilot suggests code while programming.



Created using Copilot Designer

[AI Vocabulary Glossary](#) - A glossary of terms commonly used in education and media to help you easily understand them.

Using AI Appropriately

AI can support your learning by simplifying complex concepts, generating creative ideas, and improving writing skills. However, it's crucial to use AI thoughtfully and ensure your work remains original and uniquely yours. Examples of appropriate use include:

- **Simplifying complex ideas:** "Explain the concept of gravity in simple terms."
- **Improving writing:** "Check the grammar in my blog post."
- **Generating creative ideas:** "I need ideas for a poster about climate change."
- **Reviewing and critically analysing texts for accuracy:** "Analyse this article on World War II for accuracy?"

Inappropriate Use of AI

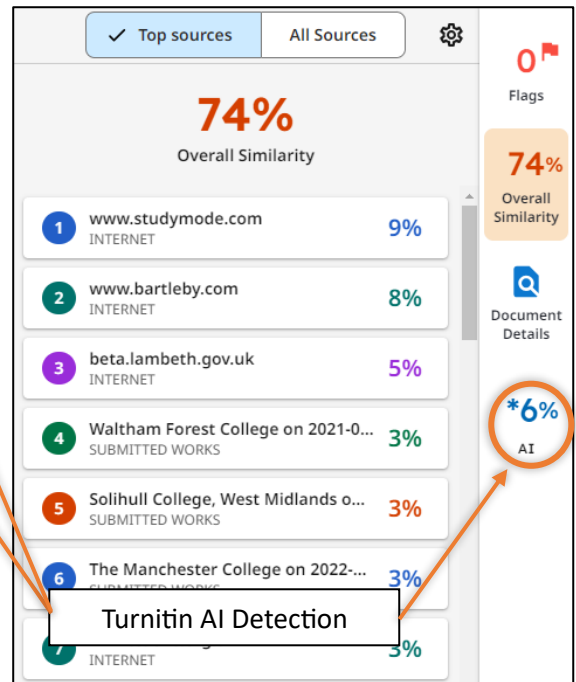
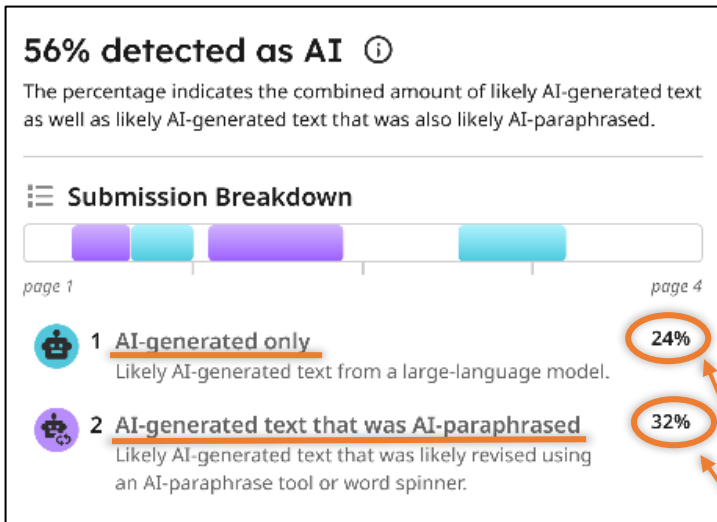
Misusing AI can lead to academic misconduct and plagiarism. Examples of inappropriate use include:

- **Submitting AI-generated work as your own:** Asking AI to write an essay or complete homework for you.
- **Relying solely on AI:** Depending on AI for all problem-solving or project creation limits your learning.
- **Bypassing learning opportunities:** Using AI to avoid challenging tasks deprives you of valuable skills.

Guidelines for Using AI in Assignments

When incorporating AI, clearly reference its contributions:

- **State AI contributions:** Specify which parts of your work were influenced by AI.
- **Include AI tool details:** Mention the name and version of the AI tool used.
- **Explain AI use:** Briefly describe how AI supported your work.
- **Document AI interactions:** Keep records of your prompts and AI responses.
- **Acknowledge AI sources:** Reference AI tools consistently with academic integrity standards.



AI and Paraphrasing Detection

Be aware that teachers have the ability to detect AI-generated content in assignments using Turnitin, this includes text which has been paraphrased using AI. This means any misuse of AI to produce and edit assignments can be easily identified, and students caught submitting AI-generated work as their own may face academic penalties for academic misconduct. It's important to use AI responsibly to maintain academic integrity.

Academic Integrity and AI

Maintain academic integrity by ensuring all submitted work is your own. Misusing AI violates the College's Academic Policy and can result in penalties.

AI Safety and Data Privacy

Be cautious with data shared with AI tools:

- **Avoid sensitive information:** Do not share personal, financial, or confidential details with AI tools.
- **Understand data policies:** Familiarise yourself with the data collection and usage policies of AI platforms.
- **Protect College data:** Adhere to the College's data privacy and security policies.
- **Report issues:** Promptly report any data misuse or privacy breaches to the College's IT Team.
- **Mind age requirements:** Seek parental consent if under 18 before using AI tools.

By following these guidelines, you can responsibly integrate AI into your learning experience while maintaining academic integrity and privacy.

For further support speak to your SLA or teacher for clarification and guidance.